

MARKET SCREEN

12 Juni 2019

Periode Minor (1-5 hari) : Menguat

Periode Intraday : Melemah

Support-Resistance IHSG : 6,235.7 - 6,345.2

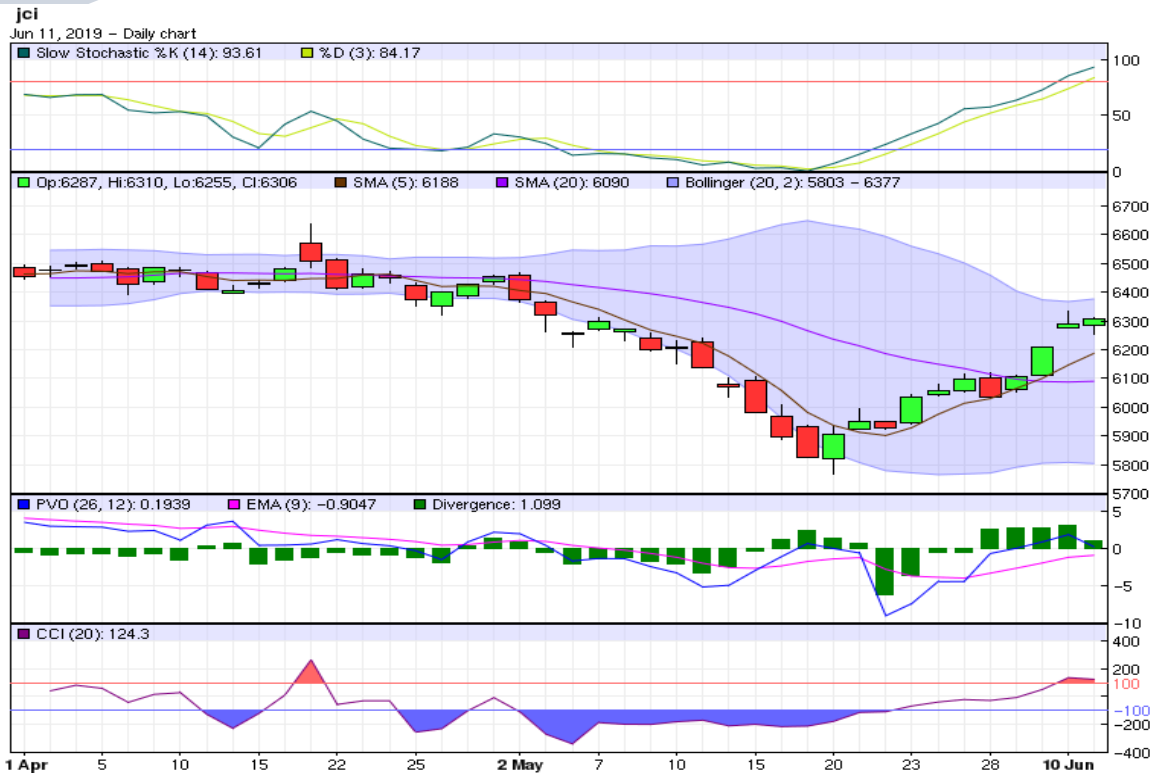
Support-Resistance USD/IDR : 14,201 - 14,257

Saham yang layak dicermati

ADES, HMSP, ICBP, INDF, KLBF, MYOR, JPFA, MAIN, TKIM, BBKP, BNGA, BMRI, BNLI, BBRI, CMNP, EXCL, ANTM, TINS, INCO, MNCN, RALS, MAPI, UNTR, ADHI, APLN, CTRA, KIJA, PTPP, SMRA, SSIA, TOTL

Perkembangan Terkini

- IHSG bersama dengan bursa saham regional berhasil mempertahankan kinerja positifnya diperdagangkan kemarin. IHSG terkerek 0,26 persen ke level 6.305,99. Bursa China menguat menyusul laporan yang mengindikasikan rencana pemerintah China mendorong investasi infrastruktur, ditengah ancaman kenaikan tarif impor lanjutan oleh AS.
- Indikator Japan *core machinery orders* bulan April 2019 meningkat 5,2% mom (+2,5% yoy), setelah mampu tumbuh 3,8% mom (-0,7% yoy) di bulan sebelumnya. Kenaikan belanja modal perusahaan Jepang mencapai level tertinggi dalam 6 bulan, seiring naiknya belanja modal sektor manufaktur. Kondisi ini menjadi sinyal positif ekspansi modal dan aktivitas manufaktur Jepang 6-9 bulan mendatang.
- Sementara itu, bursa AS ditutup melemah diperdagangan lalu. Indeks saham Dow Jones (-0,05%) dan S&P 500 (-0,04%) masing-masing bergerak kelevel 26.048,51 dan 2.885,72. Sentimen utama pasar datang dari penundaan implementasi tarif impor AS dari Meksiko, dan meningkatnya ekspektasi penurunan FFR di bulan Juli mendatang. Ekspektasi pasar atas turunnya FFR (CME FedWatch) mencapai 78% di bulan Juli dan 97,1% di bulan Desember 2019.
- Dari sisi ekonomi AS, harga barang dan jasa di tingkat produsen naik 0,1% mom di bulan Mei, menyusul kenaikan 0,2% di bulan April. Perlambatan ini terjadi akibat turunnya harga barang dikelompok energi dan makanan.
- Mayoritas bursa Asia pagi ini dibuka bervariasi. Harga minyak Brent (WTI) terkoreksi ke level USD 61,55 (USD 52,60) perbarell, dan harga emas naik ke level USD 1.331,70/troy ounce.



Pola Indikator Teknikal

- Aaron Up dominan diatas Aaron Down, sementara indikator ADX memperlihatkan sinyal indeks bergerak trading menguat.
- Chaikin Volatility dan trend Bollinger Bands Width menurun. Volatilitas pasar melemah dan rentang pergerakan harga mulai menyempit.
- Indikator CCI dan Williams%R bertahan di area jenuh beli, sebagai indikasi potensi indeks menguat dalam jangka pendek.
- Slow Stochastic %K bergerak di atas indikator pemicunya, %D menuju area jenuh beli, yang menunjukkan potensi indeks menguat dalam jangka pendek.
- Indikator Chaikin Money Flow di bawah nol, dengan dominasi tekanan jual lemah.
- Artinya secara teknikal, di periode menengah (1-5 hari kedepan) pasar diprediksi **menguat**. Sedangkan untuk hari ini, indeks diperkirakan bergerak **melemah**.

Seleksi Saham, 12 Juni 2019

Panduan Penggunaan

- ✓ Tabel ini berguna untuk menyeleksi saham-saham yang menarik untuk diperdagangkan hari ini, berdasarkan sinyal dari sejumlah indikator teknikal seperti Fast Stochastic, Slow Stochastic, RSI, dan Stoch RSI.
- ✓ Fokuskan analisis Anda pada saham-saham yang memberikan sinyal sama dan terbanyak, baik (B) atau (S). Perhatikan juga saham-saham dengan indikator utama Fast Stochastic (FS), Slow Stochastic (SS) yang menunjukkan sinyal (B) atau (S) secara bersamaan.
- ✓ Sebelum melakukan aksi beli atau jual, Anda wajib melakukan analisis teknikal untuk saham yang sudah dipilih sebelumnya. Meskipun indikator teknikal suatu saham memberikan banyak sinyal beli (B), bukan berarti posisi beli atau potensi kenaikan yang mutlak terjadi. Anda tetap diwajibkan menganalisis kondisi dan timing pergerakan saham tersebut, dengan analisis teknikal.
- ✓ Rentang pergerakan harga *support resistance* harian ini dihitung dengan menggunakan metode pivot point dan data input harian.
- ✓ Informasi ini juga bisa Anda dapatkan di website dmia.danareksaonline.com.

	Kode	Aneka Industri	MACD	FS	SS	RSI	StochRSI	CCI	S2	S1	R1	R2
1	ASII	ASTRA INTERNATIONAL Tbk	B	S	B	S	S	S	7,358	7,492	7,717	7,808
2	AUTO	ASTRA OTOPARTS Tbk	B	B	B	S	S	S	1,455	1,460	1,470	1,475
3	GJTL	GAJAH TUNGGAL Tbk	B		B	S	S	S	635	650	685	705
4	MYRX	HANSON INTERNATIONAL Tbk	B	B		S	S	S	105	106	108	109
5	IMAS	INDOMOBIL SUKSES INTERNASIONAL Tbk	B	S	S	B	B	B	2,617	2,653	2,723	2,757
6	INDS	INDOSPRING Tbk	B	B	B	S	S	S	2,273	2,317	2,437	2,513
7	KBLI	KMI Wire and Cable Tbk	B		B	B	B	B	553	567	592	603
8	MASA	MULTISTRADA ARAH SARANA TBK	B		S	S	S	S	547	568	623	657
9	PBRX	PAN BROTHERS Tbk	B	B		B	B	B	543	547	552	553
10	ADMG	POLYCHEM INDONESIA Tbk	B	B	B	S	B	B	230	238	258	270
13	SMSM	SELAMAT SEMPURNA Tbk	B	S		S	S	S	1,560	1,575	1,620	1,650

	Kode	Industri Barang Konsumsi	MACD	FS	SS	RSI	StochRSI	CCI	S2	S1	R1	R2
1	ADES	AKASHA WIRA INTERNATIONAL Tbk	B	B	B	S	S	S	1,027	1,038	1,068	1,087
3	GGRM	GUDANG GARAM Tbk	B		B	S	B	B	78,983	79,492	80,292	80,583
4	HMSP	HANJAYA MANDALA SAMPOERNA Tbk	B	B	B	S	B	B	3,287	3,333	3,423	3,467
5	ICBP	INDOFOOD CBP SUKSES MAKMUR Tbk	B	B	B	B	B	B	9,783	9,967	10,242	10,333
6	INDF	INDOFOOD SUKSES MAKMUR Tbk	B	B	B	B	B	B	6,567	6,808	7,183	7,317
7	KLBF	KALBE FARMA Tbk	B	B	B	B	B	B	1,397	1,428	1,478	1,497
9	KAEF	KIMIA FARMA (PERSERO) Tbk	B			B	B	B	3,340	3,370	3,420	3,440
10	MYOR	MAYORA INDAH Tbk	S	B	B	B	B	B	2,547	2,563	2,593	2,607
11	ROTI	NIPPON INDOSARI CORPINDO Tbk	B		B	S	S	S	1,287	1,298	1,318	1,327
13	TSPC	TEMPO SCAN PACIFIC Tbk	B		B	S	S	S	1,543	1,567	1,617	1,643
15	ULTJ	ULTRAJAYA MILK IND AND TRDG CO	B	S	B	S	S	S	1,355	1,365	1,390	1,405
16	UNVR	UNILEVER INDONESIA Tbk	B		B	S	S	S	43,733	44,017	44,617	44,933

	Kode	Industri Kimia	MACD	FS	SS	RSI	StochRSI	CCI	S2	S1	R1	R2
2	ARNA	ARWANA CITRAMULIA Tbk	B	B	B	B	B	B	497	503	513	517
4	APLI	ASIAPLAST INDUSTRIES Tbk	B		B	S	S	S	90	90	90	90
5	BTON	BETONJAYA MANUNGGAL Tbk	B		B	B	B	B	216	220	230	236
6	BUDI	BUDI STARCH AND SWEETENER Tbk	B		B	S	S	S	98	99	101	102
8	TPIA	CHANDRA ASRI PETROCHEMICAL Tbk	S		B	S	B	S	4,627	4,813	5,093	5,187
9	CPIN	CHAROEN POKPHAND INDONESIA Tbk	B		B	S	S	S	4,720	4,820	5,000	5,080
10	EKAD	EKADHARMA INTERNATIONAL Tbk	B			S	S	S	833	837	847	853
12	GDST	GUNAWAN DIANJAYA STEEL Tbk	B	B	B	B	B	B	74	84	100	106
13	SMCB	HOLCIM INDONESIA Tbk	B	B	B	S	B	B	1,448	1,492	1,562	1,588
14	INKP	INDAH KIAT PULP AND PAPER Tbk	B	S	S	S	S	S	7,250	7,425	7,900	8,200
16	INTP	INDOCEMENT TUNGGAL PRAKARSA Tbk	B	S	S	S	S	S	19,517	20,033	21,208	21,867
18	JPFA	JAPFA COMFEED INDONESIA Tbk	B	B	B	S	S	S	1,460	1,485	1,525	1,540
20	MAIN	MALINDO FEEDMILL Tbk	B	BB	BB	S	S	S	1,025	1,035	1,060	1,075
21	TKIM	PABRIK KERTAS TJIWI KIMIA Tbk	B	S	B	B	B	B	10,483	10,967	11,967	12,483
22	SMGR	SEMEN INDONESIA (PERSERO) Tbk	B		B	S	S	S	11,458	11,717	12,317	12,658

No	Kode	Industri Keuangan	MACD	FS	SS	RSI	StochRSI	CCI	S2	S1	R1	R2
1	ADMF	ADIRA DINAMIKA MULTI FINANCE Tbk	B	S		S	S	S	9,775	9,825	9,925	9,975
3	INPC	BANK ARTHA GRAHA INTERNASIONAL Tbk	B			S	S	S	69	70	71	71
4	BBKP	BANK BUKOPIN Tbk	B	B	B	B	B	B	279	289	307	315
5	BBCA	BANK CENTRAL ASIA Tbk	B	S	S	B	B	B	28,950	29,250	29,825	30,100
6	BNGA	BANK CIMB NIAGA Tbk		B	B	B	B	B	950	1,000	1,080	1,110
7	BDMN	BANK DANAMON INDONESIA Tbk	B	B	B	S	S	S	4,630	4,670	4,790	4,870
9	BJBR	BANK JABAR BANTEN Tbk	B	B	B	S	S	S	1,608	1,617	1,642	1,658
10	BMRI	BANK MANDIRI (PERSERO) Tbk	B	B	B	B	B	B	7,758	7,817	7,917	7,958
11	BBNI	BANK NEGARA INDONESIA Tbk	B	B	B	S	S	S	8,375	8,475	8,675	8,775
12	PNBN	BANK PAN INDONESIA Tbk	B		B	S	S	S	1,218	1,227	1,252	1,268
13	BNLI	BANK PERMATA Tbk	B	B	B	S	B	B	780	805	855	880
14	BBRI	BANK RAKYAT INDONESIA (PERSERO) Tbk	B	B	B	S	S	S	4,110	4,170	4,270	4,310
15	AGRO	BANK RAKYAT INDONESIA AGRONIAGA Tbk	B	B	B	S	S	S	275	279	287	291

No	Kode	Industri Keuangan	MACD	FS	SS	RSI	StochRSI	CCI	S2	S1	R1	R2
1	BSIM	BANK SINAR MAS Tbk	S	S	S	S	S	S	548	552	557	558
2	BBTN	BANK TABUNGAN NEGARA (PERSERO) Tbk	B	S	B	S	S	S	2,520	2,540	2,580	2,600
3	BTPN	BANK TABUNGAN PENSUNAN NASIONAL Tbk			B	B	B	B	3,623	3,637	3,657	3,663
4	BVIC	BANK VICTORIA INTERNATIONAL Tbk	B	S	S	S	S	S	166	166	168	170
5	BFIN	BFI FINANCE INDONESIA Tbk	B		B	S	S	S	627	633	648	657
6	CFIN	CLIPAN FINANCE INDONESIA Tbk	B	B	B	B	B	B	319	323	329	331
7	KREN	KRESNA GRAHA SEKURINDO Tbk	B	S	B	S	S	S	583	592	612	623
8	MFIN	MANDALA MULTIFINANCE Tbk	S		S	S	S	S	1,000	1,000	1,000	1,000
9	APIC	PACIFIC STRATEGIC FINANCIAL Tbk	S	B	BB	S	S	S	517	518	523	527
10	PNLF	PANIN FINANCIAL Tbk	B	B	B	S	S	S	348	354	366	372
11	PANS	PANIN SEKURITAS Tbk	S		B	B	B	B	1,400	1,415	1,455	1,480
12	PNIN	PANINVEST Tbk	B		B	S	S	S	1,350	1,380	1,460	1,510
15	WOMF	WAHANA OTTOMITRA MULTIARTHA Tbk	B		B	S	S	S	316	320	328	332

No	Kode	Infrastruktur	MACD	FS	SS	RSI	StochRSI	CCI	S2	S1	R1	R2
1	CMNP	CITRA MARGA NUSAPHALA PERSADA Tbk	B	BB	BB	S	S	S	1,207	1,213	1,228	1,237
2	JSMR	JASA MARGA (PERSERO) Tbk	B		B	S	S	S	5,633	5,667	5,742	5,783
3	WEHA	PANORAMA TRANSPORTASI Tbk	B		S	B	B	B	153	153	154	155
4	TMAS	PELAYARAN TEMPURAN EMAS Tbk	B		S	S	S	S	730	750	780	790
5	PGAS	PERUSAHAAN GAS NEGARA (PERSERO)	B	S	B	S	S	S	1,920	1,960	2,065	2,130
6	RAJA	RUKUN RAHARJA Tbk	B		B	S	S	S	255	257	263	267
7	TLKM	TELEKOMUNIKASI INDONESIA Tbk	B	S	B	S	S	S	3,967	3,993	4,053	4,087
8	TBIG	TOWER BERSAMA INFRASTRUCTURE Tbk	B		B	B	B	B	3,787	3,873	4,023	4,087
10	WINS	WINTERMAR OFFSHORE MARINE Tbk	S	B	B	S	S	S	193	193	193	193
11	EXCL	XL Axiata Tbk	B	B	B	S	S	S	2,873	2,907	2,987	3,033

No	Kode	Pertambangan	MACD	FS	SS	RSI	StochRSI	CCI	S2	S1	R1	R2
1	ADRO	ADARO ENERGY Tbk	B	S	B	S	S	S	1,250	1,265	1,295	1,310
2	ANTM	ANEKA TAMBANG Tbk	B	B	B	B	B	B	748	772	817	838
3	CTTH	CITATAH Tbk	B	S		S	S	S	100	103	108	110
4	ENRG	ENERGI MEGA PERSADA Tbk	B		B	S	B	B	52	54	57	58
6	HRUM	HARUM ENERGY Tbk	B	S	S	S	S	S	1,373	1,392	1,427	1,443
7	ITMG	INDO TAMBANGRAYA MEGAH Tbk	B		B	S	S	S	16,600	16,800	17,125	17,250
8	MEDC	MEDCO ENERGI INTERNASIONAL Tbk	B			S	B	B	765	775	795	805
12	KKGI	RESOURCE ALAM INDONESIA Tbk	B	S	S	S	S	S	190	194	200	202
13	PTBA	TAMBANG BATUBARA BUKIT ASAM (PERSE)	B	S	B	S	S	S	2,857	2,893	2,973	3,017
14	TINS	TIMAH Tbk	B	B	B	B	B	B	1,100	1,135	1,190	1,210
15	INCO	VALE INDONESIA Tbk	B	B	B	B	B	B	2,763	2,847	2,997	3,063

No	Kode	Pertanian dan Perkebunan	MACD	FS	SS	RSI	StochRSI	CCI	S2	S1	R1	R2
1	AALI	ASTRA AGRO LESTARI Tbk	B	S		S	S	S	10,308	10,342	10,442	10,508
2	BISI	BISI INTERNATIONAL Tbk	B	B	B	S	S	S	1,505	1,520	1,550	1,565
3	BWPT	BW PLANTATION Tbk.	B	S	B	S	S	S	147	149	152	153
4	DSFI	DHARMA SAMUDERA FISHING INDUSTRIES	B	B	B	B	B	B	112	114	119	122
5	LSIP	PP LONDON SUMATRA INDONESIA Tbk	B	S	S	S	S	S	1,098	1,112	1,132	1,138
7	TBLA	TUNAS BARU LAMPUNG Tbk	B		S	B	B	B	808	822	842	848

No	Kode	Perdagangan dan Jasa	MACD	FS	SS	RSI	StochRSI	CCI	S2	S1	R1	R2
1	ACES	ACE HARDWARE INDONESIA Tbk	B	S		S	S	S	1,777	1,783	1,798	1,807
2	AKRA	AKR CORPORINDO Tbk	B	B	S	S	S	S	3,933	3,967	4,047	4,093
3	ASGR	ASTRA GRAPHIA Tbk	B		B	S	S	S	1,182	1,198	1,233	1,252
4	BUVA	BUKIT ULUWATU VILLA Tbk	B	S	S	S	S	S	110	113	122	128
5	CSAP	CATUR SENTOSA ADIPRANA Tbk		S		S	S	S	557	558	563	567
6	CLPI	COLORPAK INDONESIA Tbk	S	B	B	B	B	B	762	773	793	802
9	BMTR	GLOBAL MEDIACOM Tbk	B	B		B	B	B	418	430	450	458
10	HEXA	HEXINDO ADIPERKASA Tbk	B		S	S	S	S	3,030	3,040	3,070	3,090
12	JTPE	JASUINDO TIGA PERKASA Tbk	S	B		B	B	B	828	862	912	928
13	LTLS	LAUTAN LUAS Tbk	S	B	BB	S	B	B	593	607	627	633

No	Kode	Perdagangan dan Jasa	MACD	FS	SS	RSI	StochRSI	CCI	S2	S1	R1	R2
1	MPPA	MATAHARI PUTRA PRIMA Tbk	B		B	S	S	S	195	201	215	223
2	MNCN	MEDIA NUSANTARA CITRA Tbk	B	B	B	B	B	B	1,172	1,198	1,253	1,282
3	MTDL	METRODATA ELECTRONICS Tbk	B	B		B	B	B	1,167	1,203	1,263	1,287
5	MAPI	MITRA ADIPERKASA Tbk	B	B	B	B	B	B	857	883	933	957
7	MLPL	MULTIPOLAR Tbk	B	B		S	S	S	112	113	118	122
8	PANR	PANORAMA SENTRAWISATA Tbk	B	S	B	S	S	S	401	403	407	409
9	RALS	RAMAYANA LESTARI SENTOSA Tbk		B	B	B	B	B	1,672	1,708	1,768	1,792
11	AMRT	SUMBER ALFARIA TRIJAYA Tbk	S		B	S	S	S	842	878	938	962
12	SCMA	SURYA CITRA MEDIA Tbk	B	S	B	S	S	S	1,600	1,630	1,685	1,710
15	UNTR	UNITED TRACTORS Tbk	B	B	B	B	B	B	25,633	26,167	27,092	27,483

No	Kode	Properti dan Real Estat	MACD	FS	SS	RSI	StochRSI	CCI	S2	S1	R1	R2
1	ADHI	ADHI KARYA (PERSERO) Tbk	B	B	B	B	B	B	1,485	1,510	1,555	1,575
2	APLN	AGUNG PODOMORO LAND Tbk	B	B	B	B	B	B	163	165	171	175
3	ASRI	ALAM SUTERA REALTY Tbk	B	S	B	S	S	S	320	324	332	336
4	BSDE	BUMI SERPONG DAMAI Tbk	B	S	S	S	S	S	1,337	1,358	1,418	1,457
5	CTRA	CIPUTRA DEVELOPMENT Tbk	B	B	B	B	B	B	1,017	1,033	1,063	1,077
8	COWL	COWELL DEVELOPMENT Tbk	B	S	B	S	S	S	200	204	214	220
10	KIJA	KAWASAN INDUSTRI JABABEKA Tbk	B	B	B	B	B	B	265	269	275	277
11	LPCK	LIPPO CIKARANG Tbk	B	B		S	B	B	1,610	1,630	1,675	1,700
12	LPKR	LIPPO KARAWACI Tbk	S	S	S	S	S	S	302	308	322	330
14	MDLN	MODERNLAND REALTY Tbk		B	B	S	S	S	253	257	269	277
16	PWON	PAKUWON JATI Tbk	B		S	B	B	B	710	730	765	780
17	PTPP	PP (PERSERO) Tbk	B	B	B	B	B	B	1,957	2,013	2,113	2,157
18	BKSL	SENTUL CITY Tbk	B	B	S	B	B	B	119	123	131	135
19	SMRA	SUMMARECON AGUNG Tbk	B	B	B	B	B	B	1,112	1,133	1,173	1,192
20	SSIA	SURYA SEMESTA INTERNUSA Tbk		B	B	B	B	B	595	640	710	735
21	TOTL	TOTAL BANGUN PERSADA Tbk	B	B	B	S	S	S	520	525	535	540
22	WIKA	WIJAYA KARYA (PERSERO) Tbk	B	S	B	S	S	S	2,310	2,340	2,410	2,450

Keterangan: B: Buy, S: Sell,

Perhitungan level *support* dan *resistance* dilakukan menggunakan *pivot point*

FS : Fast Stochastic

SS : Slow Stochastic

RSI : Relative Strength Index

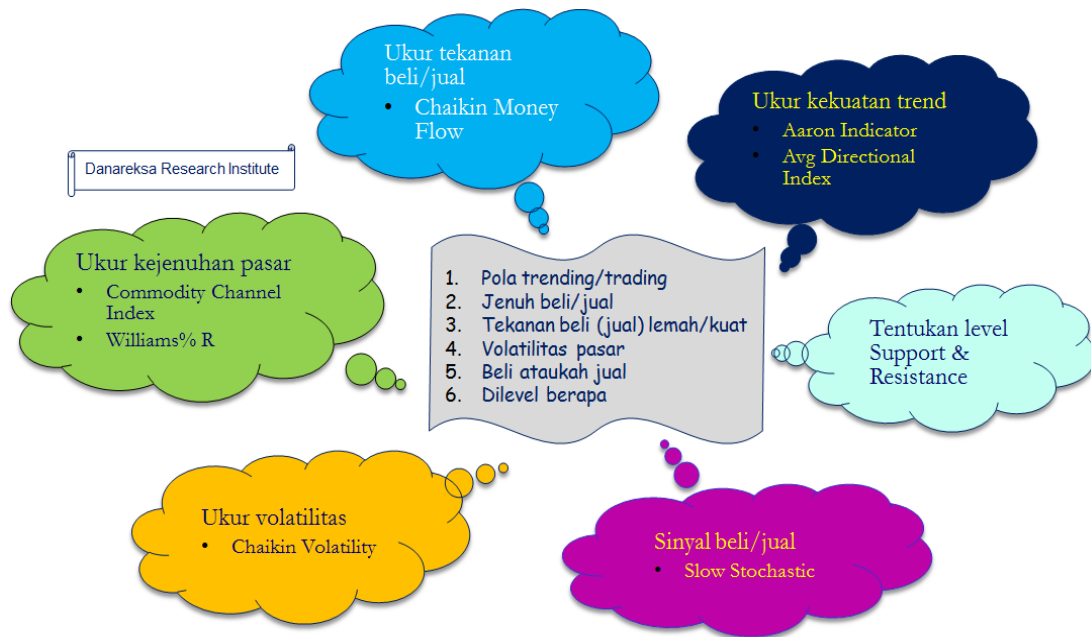
StochRSI : Stochastic RSI

CCI : Commodity Channel Index

S : Support

R : Resistance

Analisis Teknikal Lebih Cepat



Disclaimer:

The information contained in this report has been taken from sources which we deem reliable. However, none of Danareksa Research Institute and/or its affiliated companies and/or their respective employees and/or agents makes any representation or warranty (express or implied) or accepts any responsibility or liability as to, or in relation to, the accuracy or completeness of the information and opinions contained in this report or as to any information contained in this report or any other such information or opinions remaining unchanged after the issue hereof. We have no responsibility to update this report in respect of events and circumstances occurring after the date of this report. We expressly disclaim any responsibility or liability (express or implied) of Danareksa Research Institute and/or its affiliated companies and/or their respective employees and/or agents whatsoever and howsoever arising (including, without limitation for any claims, proceedings, actions, suits, losses, expenses, damages or costs) which may be brought against or suffered by any person as a result of acting in reliance upon the whole or any part of the contents of this report and neither Danareksa Research Institute and/or its affiliated companies and/or their respective employees and/or agents accepts liability for any errors, omissions or mis-statements, negligent or otherwise, in this report and any liability in respect of this report or any inaccuracy herein or omission herefrom which might otherwise arise is hereby expressly disclaimed.

Accordingly, none of Danareksa Research Institute and/or its affiliated companies and/or their respective employees and/or agents shall be liable for any direct, indirect or consequential loss or damage suffered by any person as a result of relying on any statement or omission in any information contained in this report. This report is prepared for general circulation. It does not have regard to the specific person who may receive this report.